

B F C
« Timbales »

**TIMPANI
 BELLS and CHIMES
 XYLOPHONE**

Selections From Walt Disney's **MARY POPPINS**

For Concert Band

Timbales
 Lira
 Campanas
 Xilophon
 Triángulo

Arranged by IRWIN KOSTAL
 Edited by ALFRED REED

By
 RICHARD M. SHERMAN
 ROBERT B. SHERMAN

"FEED THE BIRDS"

Slowly, but not dragging

16 "A SPOONFUL OF SUGAR"

Moderately, with ease

Xylophone

25 Gradually faster and faster

33 Brightly, but not too fast (English Music Hall 2-beat)

41

Triangle

8

cresc.

Timp.

51

Xylo

a tempo

59

67

Lira

Moderately Bright Waltz tempo (in 1)

Bells

3

3

Copyright © 1963 by Wonderland Music Company Burbank, Calif.

This arrangement Copyright © 1964 by Wonderland Music Company

International Copyright Secured

Made in U.S.A.

Used by Permission

All rights reserved

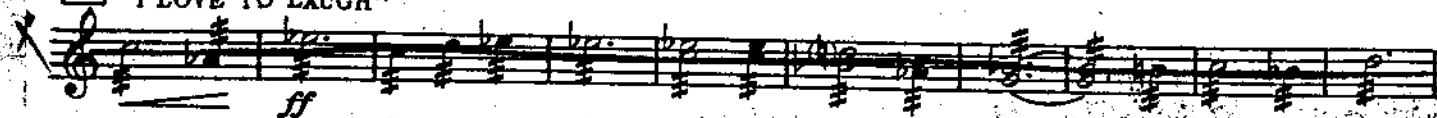
Mary Poplans

Zimbalé

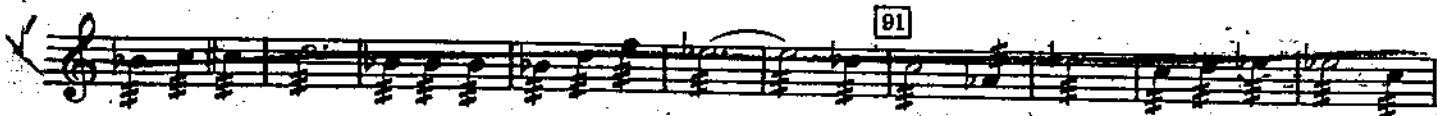
TIMPANI, BELLS & CHIMES, XYLOPHONE

3

75 "I LOVE TO LAUGH"



91



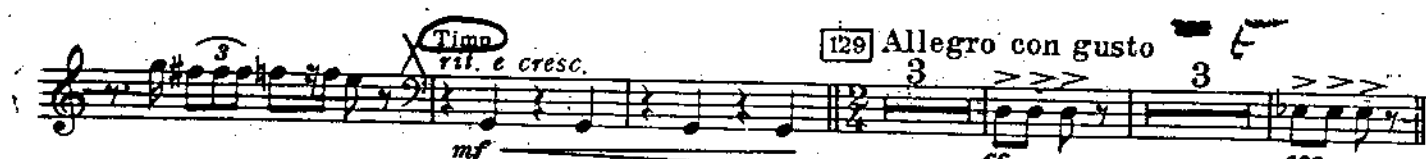
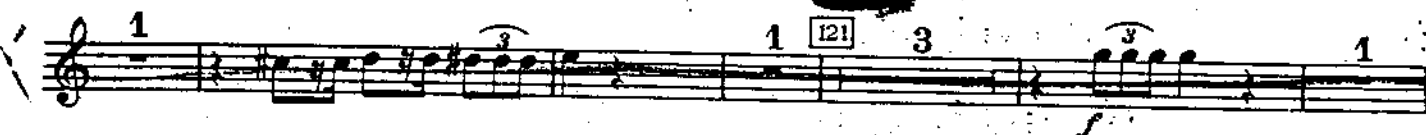
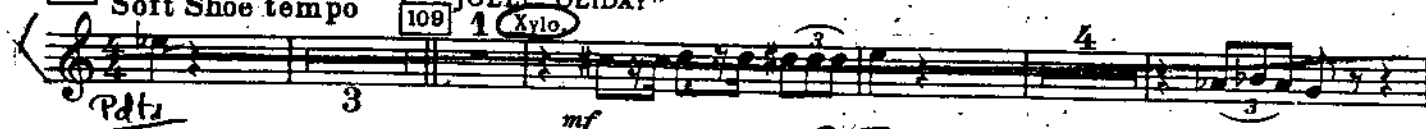
(Cover Pdts) 1105



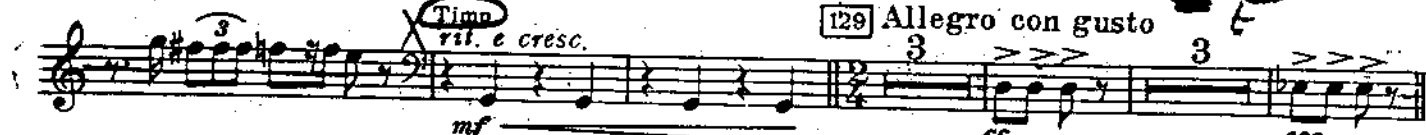
105 "SAND DANCE" Soft Shoe tempo

109 "JOLLY 'OLIDAY"

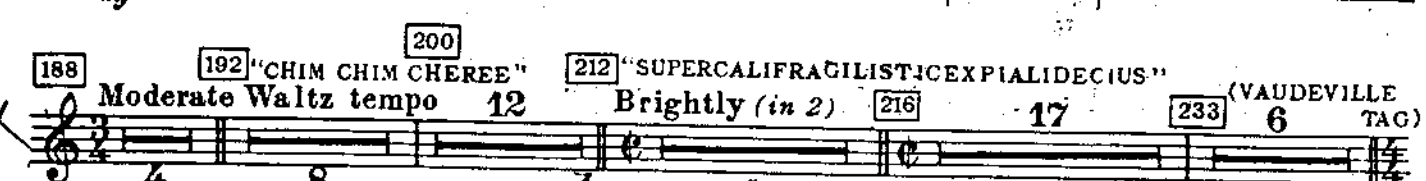
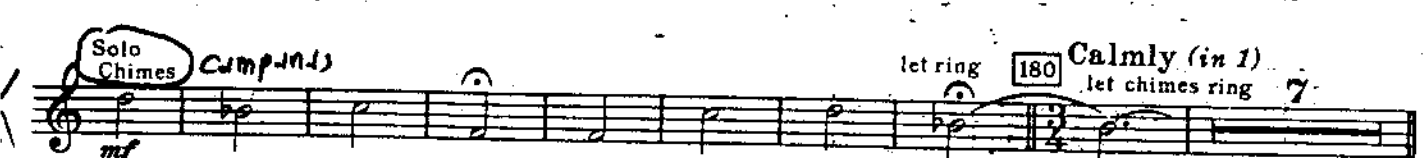
1 Xylo.



129 Allegro con gusto



137 "STEP IN TIME"



Lauter
a 3

-A C

rit.

Mary Poppen

Triebale

4

TIMPANI, BELLS & CHIMES, XYLOPHONE

261

239

Much Slower (in 4)

245

"FEED THE BIRDS"

Moderately Slow Waltz (in 3)

16

1

Chimes

1



277

(Vglo) a tempo Lira

Bells, Soli (Glock)

p



accel.

292

Bells (Glock)

Lira

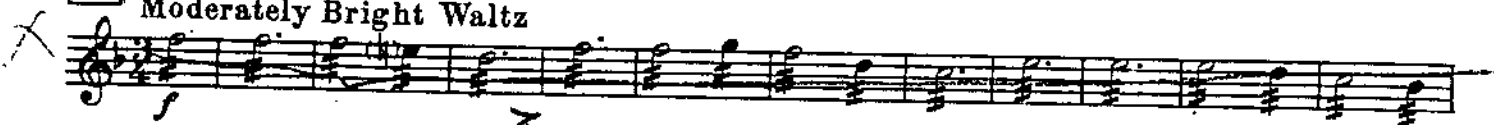
p



296

"LET'S GO FLY A KITE"

Moderately Bright Waltz



313



324 Galop

Xylo

p



328

"THE DERBY" ("JOLLY 'OLIDAY" & "A SPOONFUL OF SUGAR" PARAPHRASE)

Galop (Presto possible)

3

4

5

6

7

8

9

10

11

12

Xylo

mp



346

14

15

16

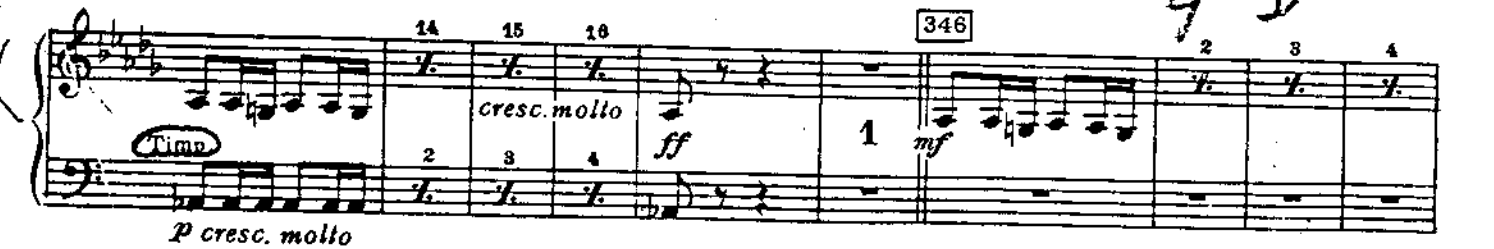
cresc. mollo

ff

1

mf

4-D



TIMPANI, BELLS & CHIMES, XYLOPHONE

5

